

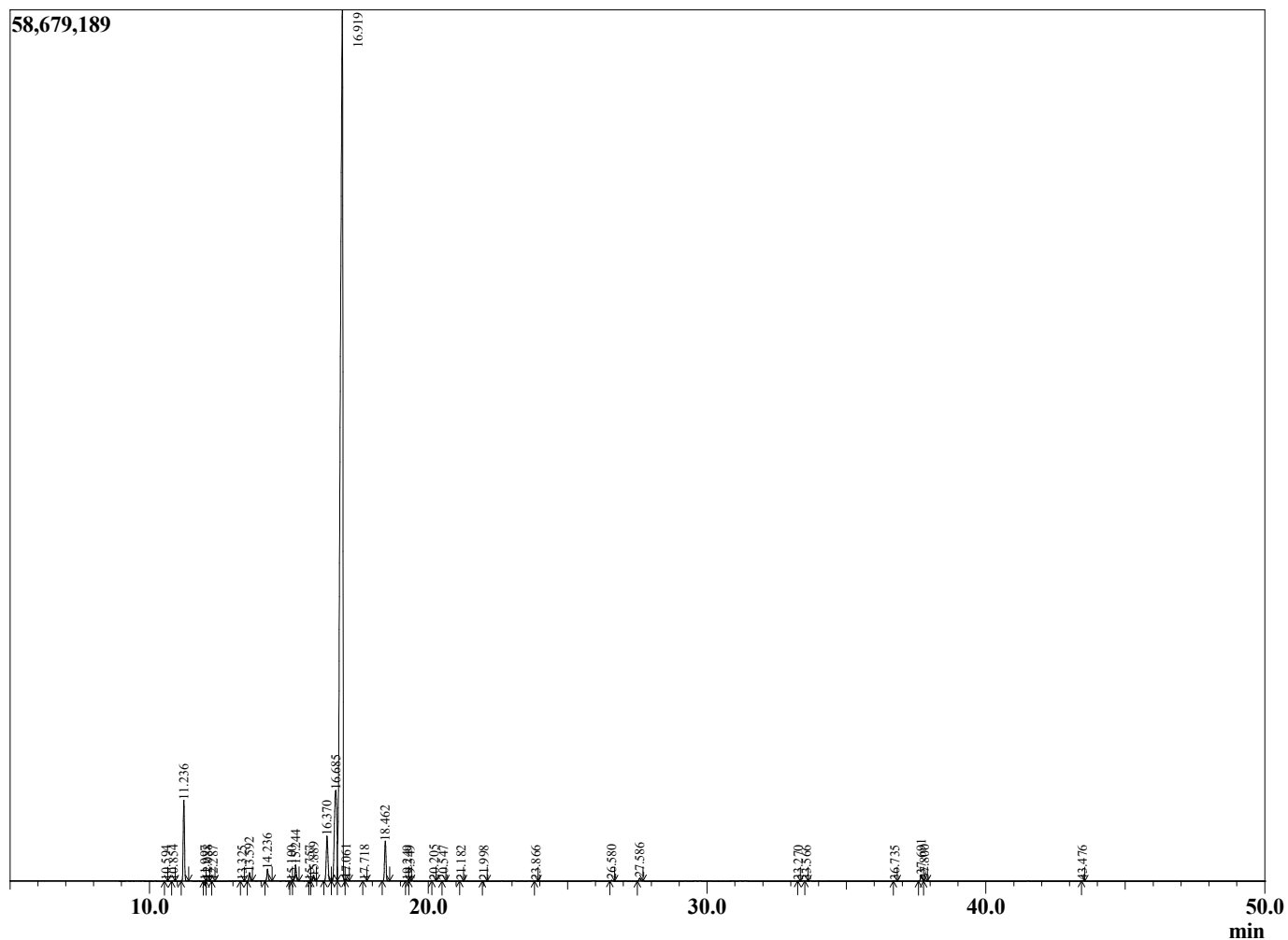
Sample Information

Sample Type : Essential Oil  
 Sample Name : Eucalyptus globulus  
 Injection : 0.10  
 Volume :

Eucalyptus Blue Gum  
 Lot# AUH31-HK  
 Country: Australia



Chromatogram Eucalyptus globulus



| R.Time | Name                          | Area%  |
|--------|-------------------------------|--------|
| 4.662  | Unidentified                  | 0.01   |
| 10.594 | Hashishene                    | 0.01   |
| 10.854 | alpha-Thujene                 | 0.02   |
| 11.236 | alpha-Pinene                  | 3.73   |
| 11.997 | alpha-Fenchene                | 0.01   |
| 12.088 | Camphene                      | 0.03   |
| 12.287 | Thuja-2,4(10)diene            | 0.01   |
| 13.325 | Unidentified                  | 0.01   |
| 13.592 | beta-Pinene                   | 0.41   |
| 14.236 | Myrcene                       | 0.61   |
| 15.100 | Pseudolimonene                | 0.01   |
| 15.244 | alpha-Phellandrene            | 0.82   |
| 15.757 | Unidentified                  | 0.00   |
| 15.889 | alpha-Terpinene               | 0.21   |
| 16.370 | para-Cymene                   | 2.82   |
| 16.685 | Limonene                      | 8.31   |
| 16.919 | 1,8-Cineole                   | 80.11  |
| 17.061 | cis-beta-Ocimene              | 0.08   |
| 17.718 | trans-beta-Ocimene            | 0.02   |
| 18.462 | gamma-Terpinene               | 2.07   |
| 19.249 | cis-Linalool oxide (furanoid) | 0.01   |
| 19.349 | Pinol                         | 0.00   |
| 20.205 | Terpinolene                   | 0.03   |
| 20.547 | para-Cymenene                 | 0.00   |
| 21.182 | Linalool                      | 0.01   |
| 21.998 | Phenylethyl alcohol           | 0.01   |
| 23.866 | trans-Pinocarveol             | 0.01   |
| 26.580 | Terpinen-4-ol                 | 0.04   |
| 27.586 | alpha-Terpineol               | 0.16   |
| 33.270 | Unidentified                  | 0.00   |
| 33.566 | Bornyl acetate                | 0.01   |
| 36.735 | Terpinyl acetate analogue     | 0.00   |
| 37.691 | alpha-Terpinyl acetate        | 0.37   |
| 37.800 | gamma-Terpinyl acetate        | 0.04   |
| 43.476 | beta-Copaene                  | 0.01   |
|        |                               | 100.00 |